

PASSAGE SET | ROUND ROSE | FITTING INSTRUCTIONS

1. Using template below, mark hole drilling centres in door.
2. Drill holes A to D as shown in Figures 1 & 2.

Do not drill holes oversize.

3. Insert Spindle & Spring assembly into shaft of both handles with spindle facing outwards.
4. Depending on door thickness, insert appropriate size long Smart Screws into two holes B and C from one side of door.
5. Using correct end of screw driver, screw long Smart screws into rose of handle as shown in Figure 3 and secure handle in place.
6. Position other handle on door over the head of long smart screws. Using Phillips end of the screw driver, attach handle to the door by screwing small Smart screws into the long Smart screws as shown in Figure 4.
7. Screw outer cover of rose on both handles in position.
8. For doors thicker than 52mm, 10mm long extensions are available separately from DesignLive.
9. There is no warranty cover for incorrect installation.

FIGURE 1

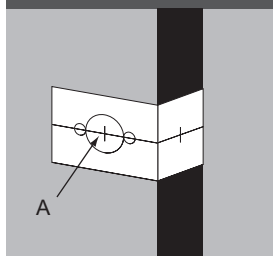


FIGURE 2

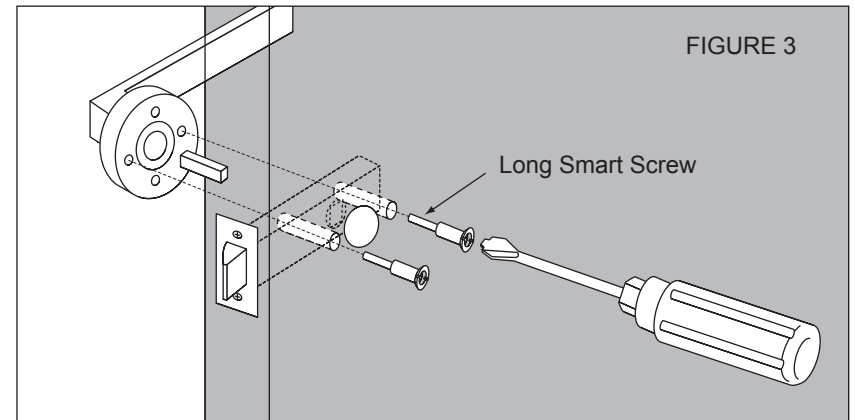
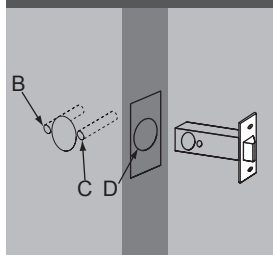


FIGURE 3

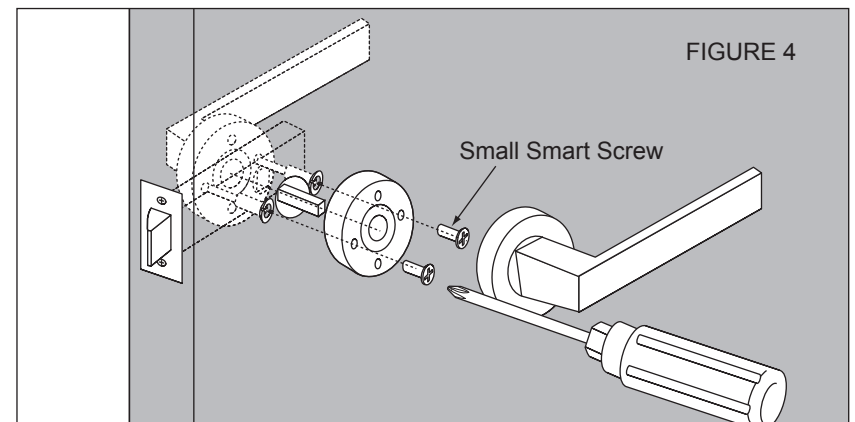
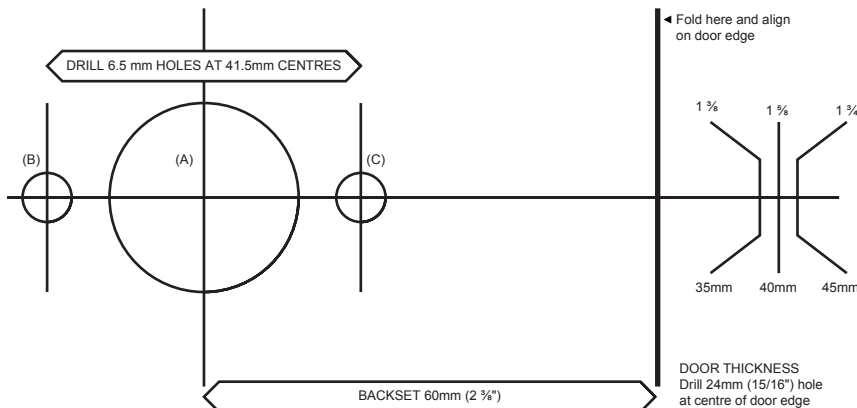


FIGURE 4

SMART SCREW SELECTION

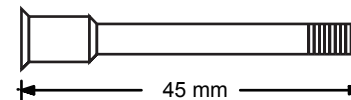


CUT ALONG DOTTED LINE



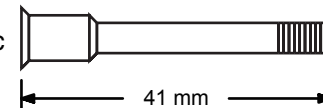
For Other Door Thickness,
Use Adapter

Golden



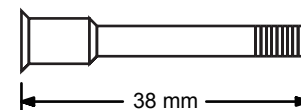
Door Thickness 38-40mm

Bright zinc



Door Thickness 34-38mm

Grey



Door Thickness 32-34mm